

Online Appendix

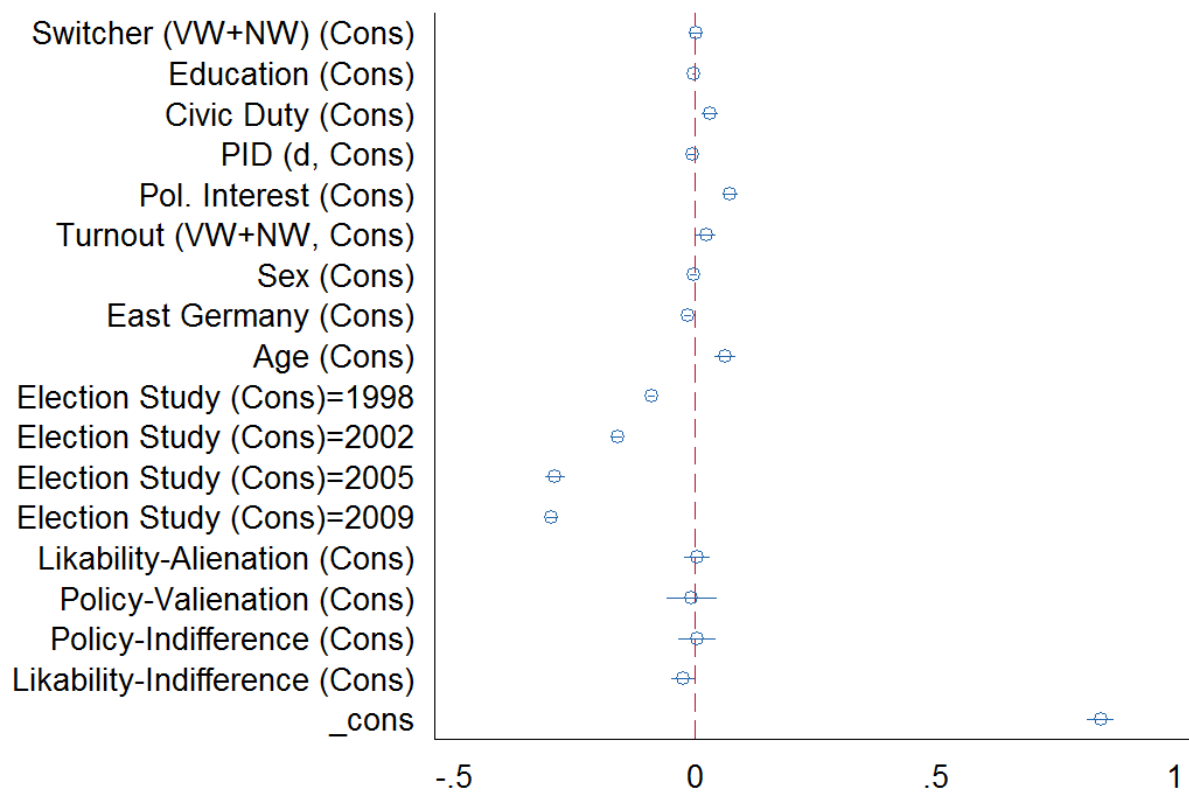


Figure 1: Linear Fixed Effects Regression on Response-Rates among Panel-Respondents

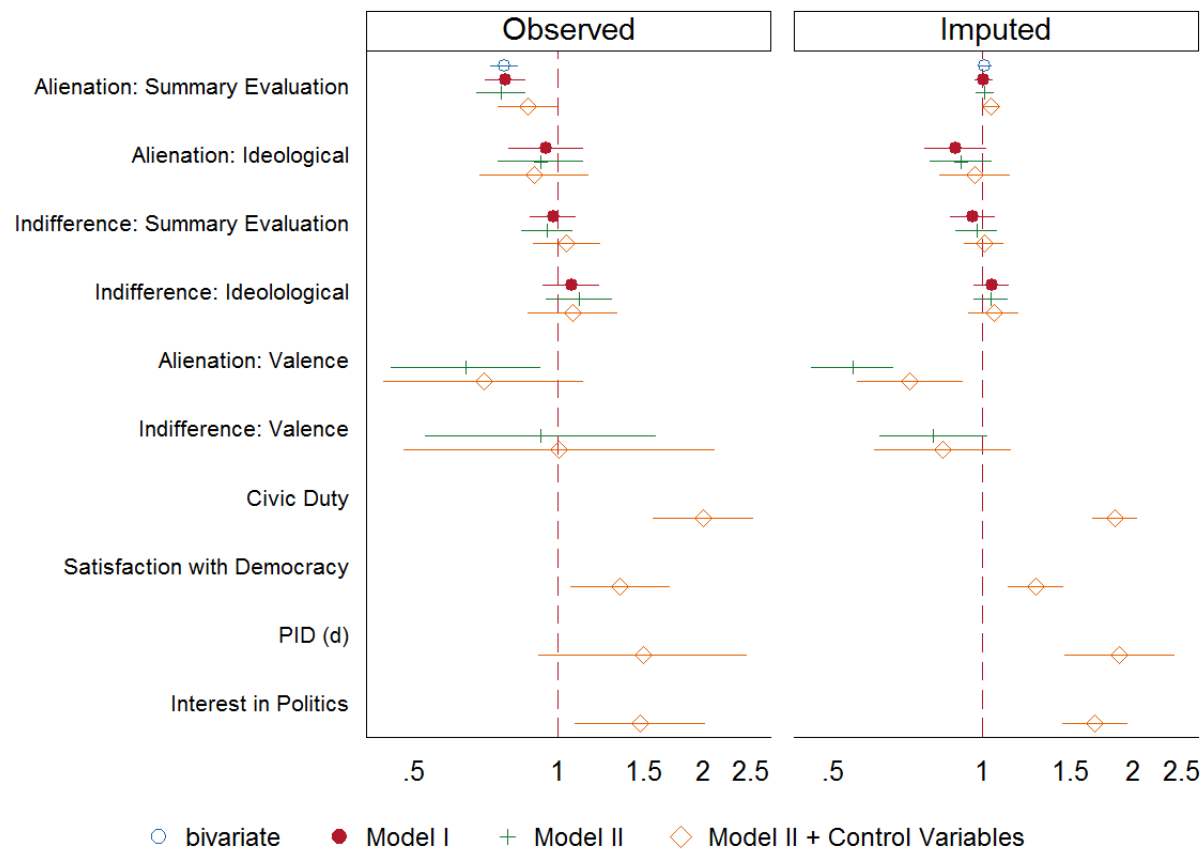


Figure 2: Models with Imputed and Observed Data demonstrating a Suppressor Effect of Summary-Evaluation-Alienation. Reported are log odds on a logarithmised scale with CIs at 95%-level.

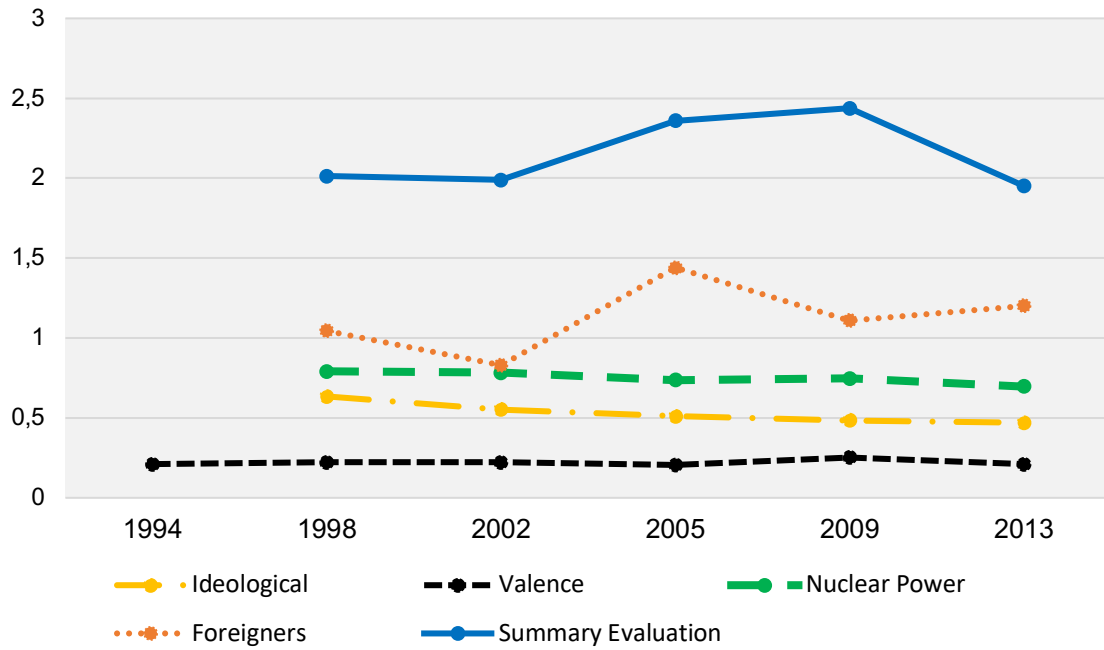


Figure 3: Development of Indicators of Alienation from 1994-2013

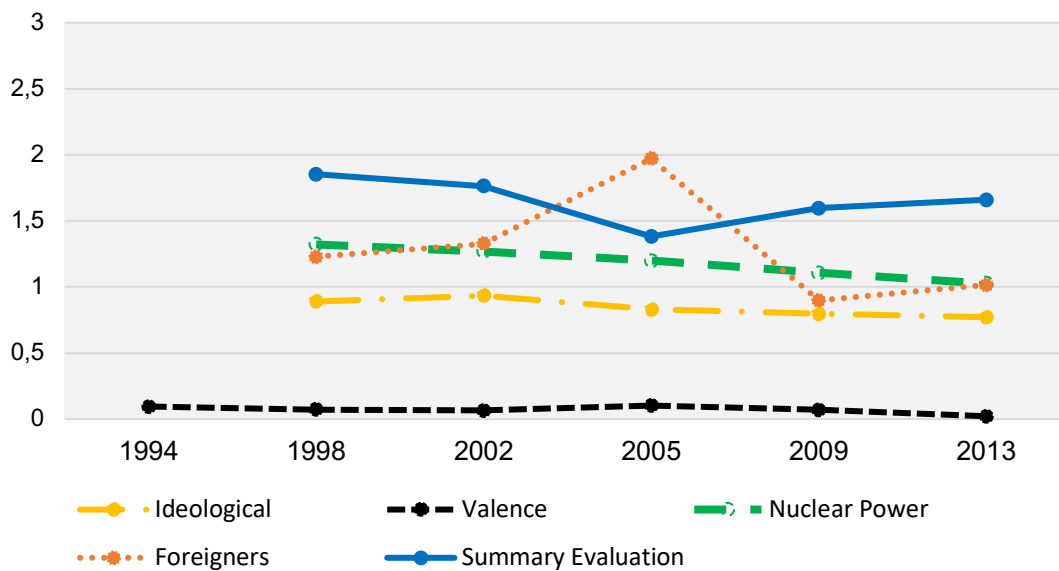


Figure 4: Development of Indicators of Indifference from 1994-2013

	LTP 1994-2002			LTP 1998-2005			LTP 2002-2009			LTP 2005-2013			LTP 2009-2017	
	1994	1998	2002	1998	2002	2005	2002	2005	2009	2005	2009	2013	2009	2013
Civic Duty	✓	✓	✓	✓	✓	✓	✓	✓	✓		✓	✓	✓	✓
Satisf. w/ Democr.	✓	✓	✓	✓	✓	✓	✓	✓	✓	✓	✓	✓	✓	✓
PID	✓	✓	✓	✓	✓	✓	✓	✓	✓	✓	✓	✓	✓	✓
Political Interest	✓	✓	✓	✓	✓	✓	✓	✓	✓	✓	✓	✓	✓	✓
Left-Right Position		✓	✓	✓	✓	✓	✓	✓	✓	✓	✓	✓	✓	✓
Party Evaluation	✓	✓	✓	✓	✓	✓	✓	✓	✓	✓	✓	✓	✓	✓
Nuclear Power		✓	✓	✓	✓	✓	✓	✓	✓		✓	~	✓	~
Foreigners		✓	✓	✓	✓		✓		✓	~	✓	✓	✓	✓

Table 1: Included (✓), missing () or substantially modified (~) items in the dataset

	(1)	(2)	(3)	(4)	(5)	(6)	(7)	(8)	(9)	(10)	(11)	(12)
	A	B	C	D	E	F	G	H	I	J	1	1+C
Turnout												
Alienation: Ideological	0.89 (0.06)										0.92 (0.10)	0.89 (0.12)
Indifference: Ideological		1.05 (0.07)									1.11 (0.09)	1.07 (0.12)
Alienation: Summary Evaluation			0.77*** (0.03)								0.76*** (0.05)	0.86* (0.06)
Indifference: Summary Evaluation				0.86*** (0.03)							0.95 (0.06)	1.04 (0.08)
Alienation: Valence					0.52*** (0.06)						0.64* (0.12)	0.70 (0.17)
Indifference: Valence						0.63** (0.11)					0.92 (0.26)	1.01 (0.38)
Alienation: Nuclear Power							0.95 (0.05)					
Indifference: Nuclear Power								1.10 (0.06)				
Alienation: Foreigners									1.01 (0.04)			
Indifference: Foreigners										0.95 (0.04)		
Civic Duty												2.00*** (0.25)
Satisfaction with Democracy												1.34* (0.16)
PID												1.50 (0.38)
Interest in Politics												1.48* (0.24)
Obs	945	914	1458	1446	1766	1766	884	815	841	701	716	584

Table 2: Regression Table of the Model shown in the article's Figure 2, Left Panel. Exponentiated coefficients; Standard errors in parentheses. * $p < 0.05$, ** $p < 0.01$, *** $p < 0.001$